



Home profile

THE OWNERS Film director Harvey B-Brown and his husband Steve Riseley, a restaurateur/entrepreneur. *THE PROPERTY* A converted factory in London's Spitalfields. There is a living room, kitchen, dining room and study, plus two bedroom suites, a bathroom and a courtyard garden.

HOUSE of the MONTH

Factory boys

Pop culture meets Land of Oz fantasy – with a few fabulous fripperies thrown in for good measure – in Harvey and Steve's converted industrial home

Photography – James Merrell
Styling – Mary Weaver
Words – Jo Leavers

← STUDY

The lamp was an impulse buy. "I popped out to the cashpoint and came back with her - that's what happens when you live right by Spitalfields Market," says Harvey.

GET THE LOOK The Marilyn Monroe photograph is by Eve Arnold. Her work is available at the Halcyon Gallery. The roll-front cabinet is from The Old Cinema. The chandelier was an antique from Follies in Folkestone. For similar, try The Chandelier & Mirror Company.

LIVING ROOM

Harvey's glass-walled study overlooks the living area with its sweep of Ligne Roset sofa. "It's a great size. You could fit a whole rugby team on there; should they choose to pop round..." he says.

GET THE LOOK The sofa is a bespoke design by Ligne Roset at Harrods. The First Lady needlepoint throw pillow and vases are by Jonathan Adler. The operating theatre lamp was found at Spitalfields Market - for similar, try Shoreditch Lighting. The pendants were installed by the property developer Chapman Button. The Jade painting is by Sharon Pinsker. You can purchase her work at art.co.uk. MASS does concrete flooring like this.



Tongue-in-cheek artwork,

punchy design combos and architectural surprises – not to mention some glittering pop star hand-me-downs – have dragged this converted factory out of its grey, industrial past. Now it hums with a new energy. ‘As newlyweds, we loved this being a completely reworked space, a fresh start,’ says Harvey B-Brown of his marriage to Steve Riseley, ‘and we decided to fill it with treasures to inspire us and lift us out of the everyday.’

Harvey had an advantage on that score, given his day job has always involved creating fantastical worlds, having worked in fashion, then directed ads and music videos. He’s directed George Michael, Elton John and Shirley Bassey, plus gloriously choreographed extravaganzas for The Sugababes, The Saturdays and Girls Aloud. ‘Ah, back in the day with Cheryl,’ he says, smiling. This all means he’s picked up some fabulous fripperies along the way, from a feathered jacket used in a George Michael shoot to a silver disco ball courtesy of Leona Lewis. Under Harvey’s direction, they add glamour to this rough-turned-luxe space.

Harvey and Steve immediately clicked with the vision of Chris Dyson Architects, which set out to retain the building’s working-class roots with brick, steel girders and factory-floor proportions, blending them with contemporary glass walls and blocky concrete. ‘So many conversions we saw – and believe me, we saw a lot – had been skimmed into blandness,’ says Harvey, ‘but this project felt exciting and on our wavelength.’

They first viewed the building when it was little more than a shell. ‘But this meant we got a say in things like the flooring and layout,’ says Harvey. They also had the help of an ‘amazing’ builder, Liam Cullen of Cullen Carpentry.

Harvey and Steve moved down to their new home from leafy Hampstead (*Livingetc* dropped by Harvey’s old place for the November 2008 issue). ‘It was a great space, but it felt more mine than ours,’ says Harvey. ‘Plus, every other couple there seemed to have a double buggy or a dog. We had neither.’

Now ensconced in Spitalfields, the couple find the neighbourhood hits just the right vibe. ‘There’s always something happening,’ says Harvey. In one direction lie the galleries of Bethnal Green and Shoreditch House members’ club – ‘Our home from home!’ – in the other, the wave of fabulous flotsam and jetsam that is Spitalfields Market. Although that has proved somewhat distracting. ‘This is the kind of place where you pop out to the bank and come back with a clanking lady table lamp!’ Harvey confesses.



Tucked away on a side street, Harvey and Steve’s home is a surprisingly quiet sanctuary. ‘We’re in the eye of the hurricane,’ says Harvey, smiling. This helps it function as a creative hub, where they can dream up new projects and play around with design ideas.

The central hallway – ‘We call it our catwalk,’ says Harvey – serves as an ever-changing gallery. Alison Carmichael’s advertising-savvy art mixes with Jonathan Adler designs and, just for fun, there’s a yellow bust of Andy Warhol.

Plenty of stars have sashayed down this runway. In fact, Bryan Ferry is even popping over for dinner tonight. They’ve been friends since Ferry made his driver screech to a halt outside a Knightsbridge shop when he spotted one of Harvey’s early window displays. But Harvey’s still down-to-earth about such things. ‘I draw inspiration from everyone around me – they might be famous, or they could be a complete unknown,’ he says.

Similarly, his ideas can stem from fashion, interiors, film or music. ‘Everything feeds into the zeitgeist,’ he says. This home has already helped Harvey dream up his next project – a feature-length film in the tradition of the best MGM musicals. He’s calling it *Blue Jean*. ‘It’s a love story,’ reveals Harvey. ‘There will be colour, costumes – and dancing with a twist.’ He nods over to the Magnus Hastings photograph of a drag-queen ‘Dorothy’, who works a look that would make the Scarecrow blush. ‘Let’s just say, expect men in heels...’ he says, smiling. With inspiration like this, Dorothy was right. There’s no place like home.

See more work by Chris Dyson Architects at chrisdyson.co.uk. Find out more about Harvey at harveybbrown.com

← HALLWAY

'Steve spotted the bust in a market in Israel - come on, where else would you find a yellow bust of Andy Warhol?' jokes Harvey. 'It was a bit tricky explaining to Tel Aviv airport security why we had a huge yellow head in our hand luggage, though.'

GET THE LOOK Mahzerandvee at Etsy does colourful resin busts like this one. On the Wall Antiques could source a triple oval overlapping mirror for you.

STUDY

Harvey's work zone is divided from the main living area by glass walls, which keep the flow, but allow privacy via a curtain. 'As we both work from home, we each need our space, but it's also nice to have a sense of where the other person is, I'd hate to feel locked away while I'm working,' says Harvey.

GET THE LOOK The ormolu desk was an eBay find. For similar, check out *And So to Bed*. Buy the Louis Kartell Ghost chair in Glossy White at Amara. The chair cushion is by Elliot Ward. Check out 1066 Pianos for bespoke grand pianos like this one.



Home truths

WHAT'S THE BEST THING ABOUT SPITALFIELDS? Great food, shopping and a real neighbourhood feel.

AND THE WORST? Beards. Far too many big beards. I still don't get it.

WHAT DO YOU LOVE ABOUT SPRING? Dining alfresco: our courtyard is like an extra room without a roof.

WHAT'S YOUR FAVOURITE LOCAL EATERIE? It's a toss up between Shoreditch House and Poppies Fish and Chips.

WHAT'S YOUR MOST OVER-USED PHRASE? 'This is my husband...' When I was younger I never dreamed it would be possible for me to marry a man, so now I say it at every opportunity.

WHAT'S YOUR BEST ADVICE? Dream those dreams – the ones you work your whole life to make a reality.

KITCHEN

Magnus Hastings' photo of drag artist Vanity Faire, aka 'Dorothy', was part of an exhibition *Why Drag?* and reflects Harvey's life-long love affair with Technicolor. 'I don't think I ever got over seeing films and TV in colour for the first time,' he says.

GET THE LOOK The kitchen was made bespoke with a Miele oven and hob and a Samsung fridge-freezer. For a kitchen like this, go to Kuche. For similar chairs, try Alexander & Pearl. The heavy concrete pendant lights are by Benjamin Hubert for Decode.

DINING ROOM →

The table is 'A great macho number the more dented and worn it gets, the better it looks,' says Harvey.

GET THE LOOK This is the Boston table by Timothy Oulton at Harrods. The living wall is by Treebox. You can purchase this Tiered fruit and flower bowl from N1 Garden Centre.





‘Our bedroom is like a boutique hotel suite – only at home. We’ve got *the* most comfortable bed’



Livingetc loves

BUTTERFLY BRIGHT COLOURS set against steely greys – the ultimate mix of pretty with gritty.

THE POURED CONCRETE flooring that extends throughout the entire space for industrial impact.

HARVEY'S GLASS ROOM within a room. It's an ingenious way to create a separate space, while keeping the open-plan flow.

OUTSIZE LIGHTING – if you have a double-height space, why not work it?

AUDACIOUS DECOR MIXES As incongruously elegant as, well, men in heels.

↶ MASTER BEDROOM ↗

The couple have embraced the factory bones of the building, but embellished it with gleam, colour and decorative flourishes. The mirror was mounted on to an easel to get round the issue of the curved wall and the love seat was reupholstered. ‘We wanted something wild, fantastic and camp as a foil to the grey concrete,’ says Harvey. ‘You have to have courage with design ideas – and know when to go for it.’

GET THE LOOK The Roche Bobois love seat was reupholstered by David Scotcher Interiors in Butterfly Parade fabric by Christian Lacroix for Designers Guild. The bed is by Timothy Oulton at Harrods. The pillowcases are by Lush Designs. The mirror was sourced from Swag Antiques. The Anglepoise lamps are from John Lewis. Turner & Cox does industrial storage units like this one.

BATHROOM ↗

Steely grey, matt tiles set the tone for the home's bathing spaces. ‘We're a bit spoilt – when we go to hotels, it's hard to match what we have at home,’ says Harvey.

GET THE LOOK The bath is by Roca. These are the Porcelain Brick D tiles in Taupe from Tower Ceramics. You can buy a similar Psycho-themed Bates Motel towel set from Amazon.



MASTER EN SUITE ↗

The vintage Sylvester the Cat statue is a reminder of Harvey's great love of cartoon classics. 'I grew up in awe of the magical world of animation and never lost my love of those bright colours,' he says.

GET THE LOOK The shower is by Roca. For a towel-warming radiator like this one, check out the Poll Chrome from The Radiator Company. Etsy sells vintage-style cartoon statues like this. The feathered jacket is from one of Harvey's music video shoots with George Michael.

The blueprint



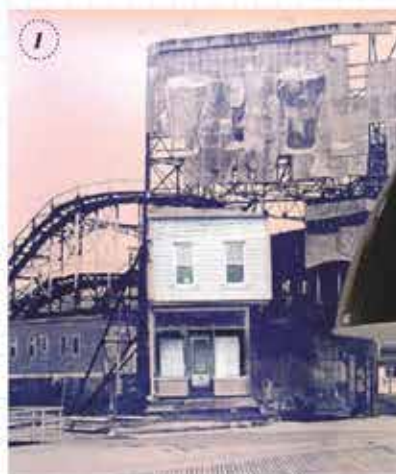
Download your digital edition today: visit housetohome.co.uk/digital-editions/livingetc



IDEAS toSTEAL

Give old Hollywood glamour a playful twist for added drama. Lights, camera, action!

KEY PRODUCTS



KEY SURFACES



FROM LEFT Brixton ceramic floor tile in Mid Grey, £30 per sq m, Bathstore; Staked Lime absolute matt emulsion, £35 for 2.5l, Little Greene; and Paste the Wall brick-effect wallpaper, £12.72 per 10m roll, Colours at B&Q



KEY FEATURE Internal glass wall

For those who love an open-plan living space, but also crave a little privacy from time to time, a glass wall inside your home may be just the trick. Harvey uses this clever bit of design for his study – the transparent wall allows the living space to flow, yet simply drawing a curtain creates a secluded zone for when inspiration strikes. Glass at Work can provide a variety of bespoke glass interior walls, with a frameless single-glazed partitioning such as this costing from approx £2,170 for a 2.2 x 1.5m design.



1 Annie Hall silk-screen print, £45, Kate Gibb at Print Club London 2 Oslo ceiling pendant, £119, Atkin and Thyme 3 Tintin and Snowy resin jar, £145, Tusch und Egon 4 Albany Brown leather-effect trunks, £495 for a set of three, Alexander & Pearl 5 My Large ceramic cake stand, £49.95, Anouk Jansen at Howkapow 6 Little Distortion candlestick holder, £15, Paul Loebach for Aneaware at Urban Outfitters 7 Jasper brushed cotton corner sofa, from £2,240, Love Your Home

Research/Hannah Franklin Photography (interior glass wall) James Minwell, (corner sofa) Probyns